


Coversheet for Network Site Specific Group Agreed Documentation

Document Title	Clinical Management Protocol – Children’s Bone Tumours
Document Date	July 2010
Document Purpose	<ul style="list-style-type: none"> ▪ Modalities of treatment or available multi-centre trial ▪ The roles of the Principal Treatment Centre (PTC) and Paediatric Oncology Shared Care Units (POSCUs) and their linked services, e.g. radiotherapy centre, community teams. ▪ Indications for referral outside the catchment area where relevant. ▪ Identification of relevant MDTs
Authors	<p>Dr. Pam Kearns, Consultant Paediatric Oncologist & Solid Tumour MDT Lead, Birmingham Children’s Hospital NHS Foundation Trust</p> <p>Jeanette Hawkins, Lead Cancer Nurse, Birmingham Children’s Hospital NHS Foundation Trust</p>
References	<ol style="list-style-type: none"> 1. DH National Cancer Action Team (2008) National Cancer Peer Review Program Manual for Cancer Services 2008; Children’s Cancer Measures 2. National Institute for Health & Clinical Excellence (2005) Referral guidelines for suspected cancer: Section - Cancer in Children & Young People. 3. EURAMOS 1 ISRCTN67613327 EudraCT no. 2004-000242-20 4. Euro-E.W.I.N.G Ewing Tumour Studies 99 UKCRN ID1070
Consultation Process	Consultation was with the Solid Tumour MDT at Birmingham Children’s Hospital (BCH), Cancer Locality Group (BCH) and the West Midlands Paediatric Oncology Supra Network Group)
Review Date (must be within three years)	July 2013
Approval Signatures: Network Site Specific Group Clinical Chair	

Version History

Version	Date	Summary of change/ process
Draft V0.1, V0.2 & V0.3	15/01/2010	Draft developed Dr. Kearns & Jeanette Hawkins. Cover sheet for PBCN documents added
V0.4	18/02/2010	Finalised version following discussion at BCH Oncology MDT on 22 nd January 2010 and revision of late effects follow up section 18/02/10 in discussion with Dr Helen Jenkinson and Dr Dave Hobin
V0.5	11/03/2010	Amended version following feedback from West Midlands Paediatric Supra Network Group. Advice on sending radiology imaging changed to include electronic sharing of images
V0.6	25/05/10	Network Map added
V0.7	02.06.10	Amendments following Guidelines Sub Group

Approval Date of Network Site Specific Group

Date: July 2010

Approval Date of the Governance Committee

Date: July 2010

Approval Signatures

Pan Birmingham Cancer Network Governance Committee Chair

Name: Doug Wulff



Signature:

Date: July 2010

Pan Birmingham Cancer Network Manager

Name: Karen Metcalf



Signature:

Date: July 2010

Network Site Specific Group Clinical Chair

Name: Deepak Kalra

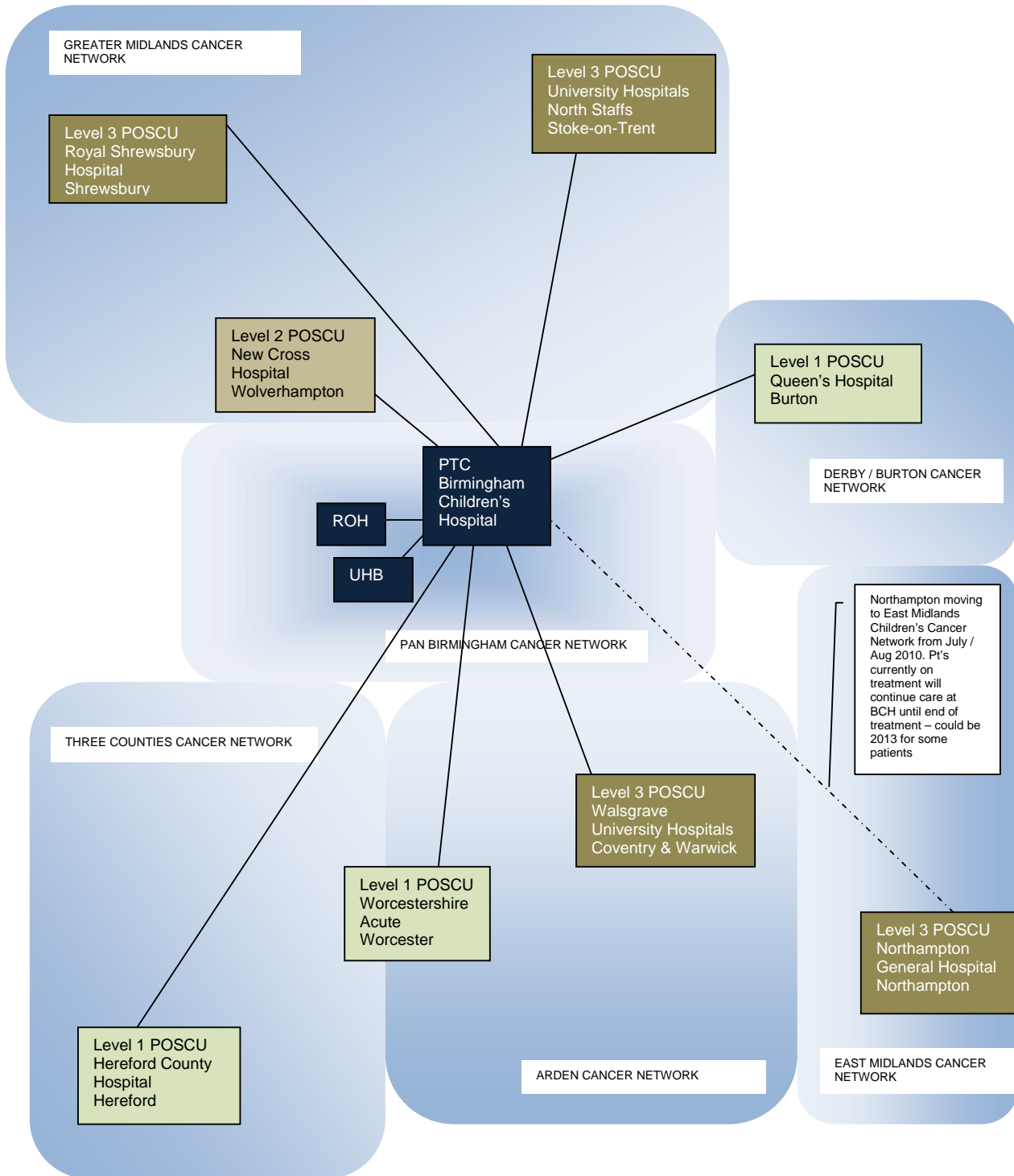


Signature:

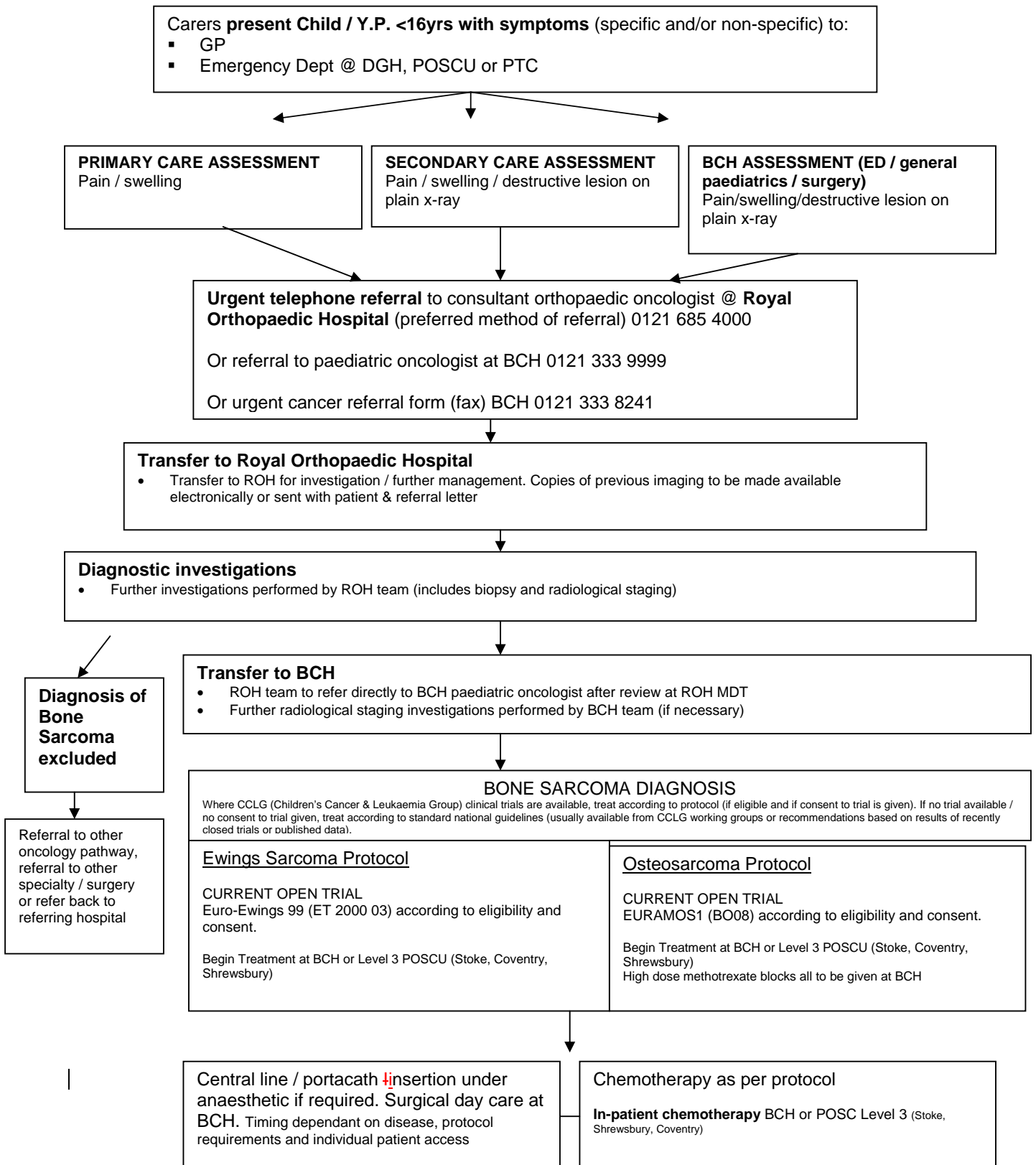
Date: July 2010

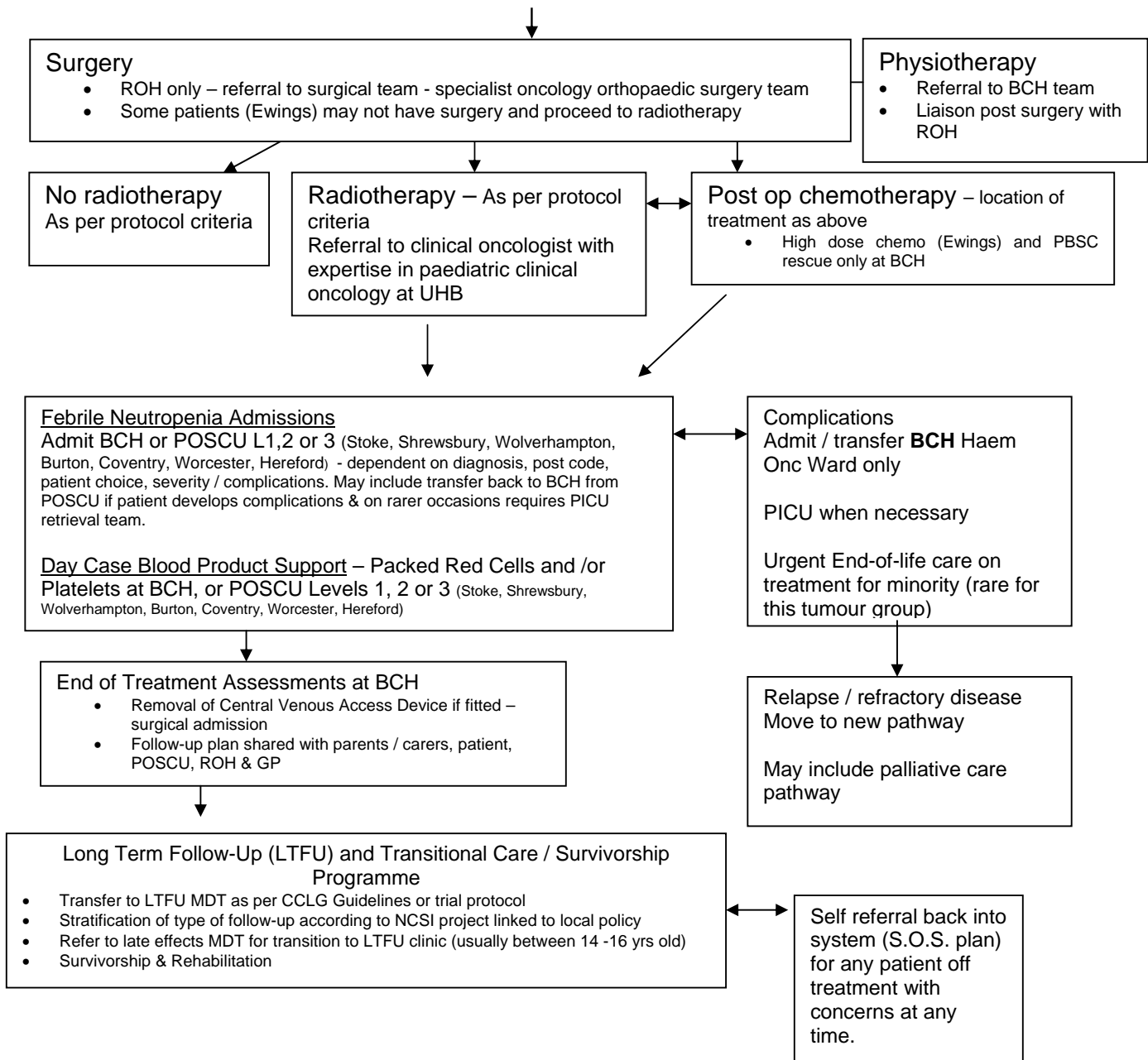
West Midlands Paediatric Oncology Supra Network

- PTC – Principal Treatment Centre
- POSCU – Paediatric Oncology Shared Care Unit
- Levels of shared care – Specified on pages 28 to 29 National Cancer Action Team Manual for Cancer Services 2008: Children’s cancer Measures 2009
- University Hospitals Birmingham UHB - Radiotherapy and Young Adult Services
- Royal Orthopaedic Hospital ROH – Bone Tumour Service



Clinical Management Pathway: **Bone Sarcoma** [DH Quality Measure 09-7A-120]





Key	
BCH	Birmingham Children's Hospital
CCLG	Childhood Cancer & Leukaemia Group
LTFU	Long Term Follow-up
MDT	Multi-disciplinary team
NCSI	National Cancer Survivorship Initiative
PICU	Paediatric Intensive Care Unit
POSCU	Paediatric Oncology Shared Care Unit
ROH	Royal Orthopaedic Hospital
TYA	Teenage & Young Adult
UHB	University Hospital's Birmingham