


Coversheet for Network Site Specific Group Agreed Documentation

Document Title	Clinical Management Protocol – Children’s Soft Tissue Sarcoma’s
Document Date	July 2010
Document Purpose	<ul style="list-style-type: none"> ▪ Modalities of treatment or available multi-centre trials ▪ The roles of the Principal Treatment Centre (PTC) and Paediatric Oncology Shared Care Units (POSCUs) and their linked services, e.g. radiotherapy centre, community teams. ▪ Indications for referral outside the catchment area where relevant. ▪ Identification of relevant MDTs
Authors	<p>Dr. Pam Kearns (Solid Tumour MDT Lead) & Dr Bruce Morland (Consultant Paediatric Oncologist) Birmingham Children’s Hospital NHS Foundation Trust</p> <p>Jeanette Hawkins, Lead Cancer Nurse, Birmingham Children’s Hospital NHS Foundation Trust</p>
References	<ol style="list-style-type: none"> 1. DH National Cancer Action Team (2008) National Cancer Peer Review Program Manual for Cancer Services 2008; Children’s Cancer Measures 2. National Institute for Health & Clinical Excellence (2005) Referral guidelines for suspected cancer: Section - Cancer in Children & Young People. 3. EpSSG RMS 2005. A protocol for non-metastatic rhabdomyosarcoma EUDRACT number: 2005-000217-35 4. EpSSG NRSTS 2005. A protocol for localised non-rhabdomyosarcoma soft tissue sarcoma. EUDRACT number: 2005-001139-31 5. BO20294. Open-label, multi-center, randomized, two stage adaptive design study of the combination of bevacizumab with standard chemotherapy in minor patients with metastatic rhabdomyosarcoma, non-rhabdomyo-sarcoma softtissue sarcoma or Ewing’s sarcoma/soft-tissue primitive neuroectodermal tumor. EUDRACT number: 2007-005017-19

Consultation Process	Consultation was with the Solid Tumour MDT at Birmingham Children's Hospital (BCH), Cancer Locality Group (BCH) and West Midlands Paediatric Oncology Supra Network Group)
Review Date (must be within three years)	July 2013
Approval Signatures: Network Site Specific Group Clinical Chair	
Date Approved by Network Governance Committee 26 / 07 / 2010	

Version History

Version	Date	Summary of change/ process
Draft V1,	Feb 2010	Draft Prepared by Dr Bruce Morland
Draft V1.1	March 2010	Jeanette Hawkins - PBCN Cover sheet added and new sentence added for parity with other clinical management protocols on; <ul style="list-style-type: none"> • Trials and National Guidelines being approved by the MDT and CCNCG - in response to comments from Dr Daphne Austin Consultant in Public Health in regard to assessing the economic impact of National Treatment Guidelines which may require service developments. • Added timing for discussion at BCH Solid Tumour MDT and concurrent referral to UHB / BCH TYA psychosocial MDT for 13-24yr olds • Abbreviation Key added
V1.3	02.06.10	Amendments following Guidelines Sub Group

Approval Date of Network Site Specific Group

Date: July 2010

Approval Date of the Governance Committee

Date: July 2010

Approval Signatures

Pan Birmingham Cancer Network Governance Committee Chair

Name: Doug Wulff



Signature:

Date: July 2010

Pan Birmingham Cancer Network Manager

Name: Karen Metcalf



Signature:

Date: July 2010

Network Site Specific Group Clinical Chair

Name: Deepak Kalra

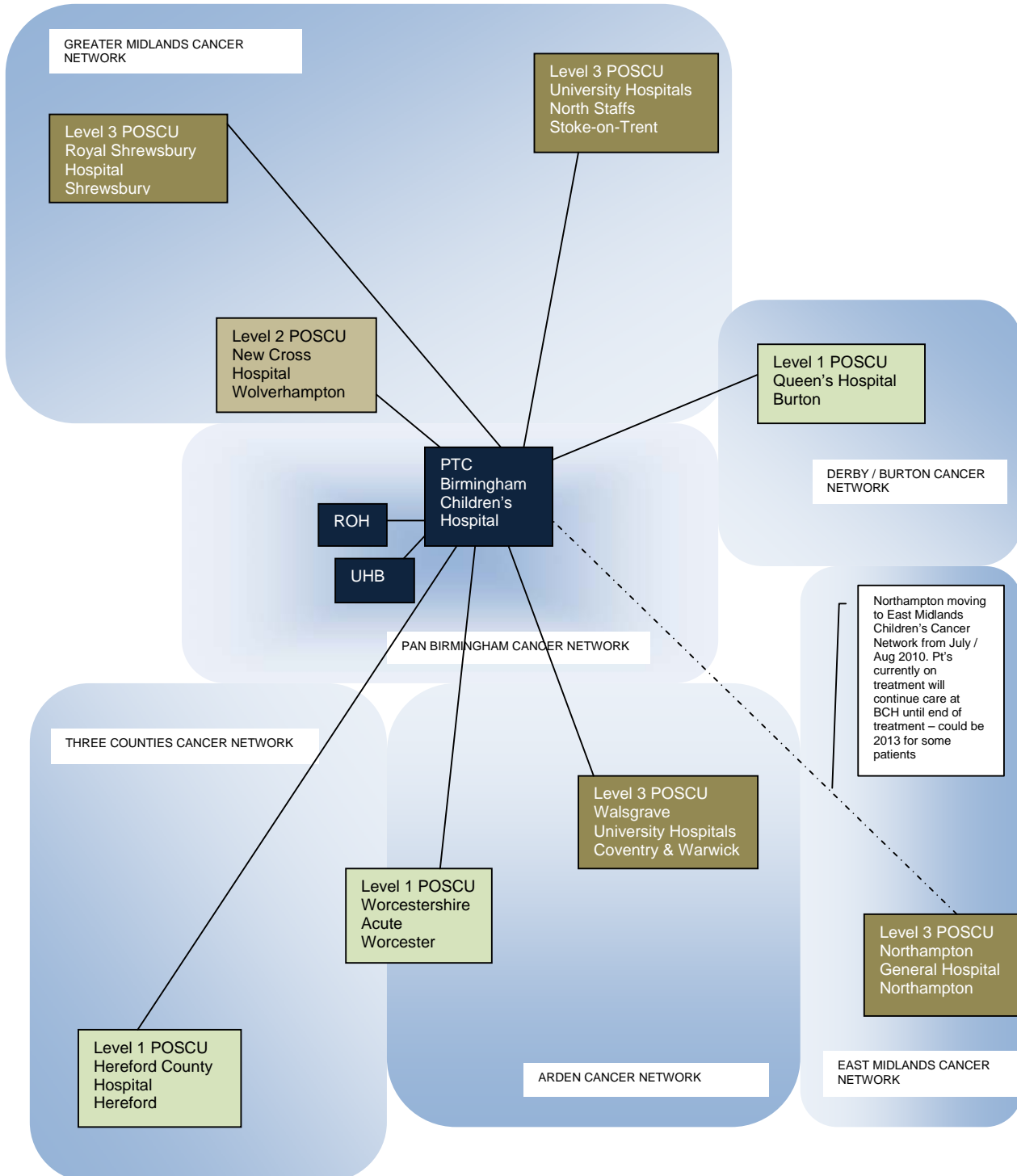


Signature:

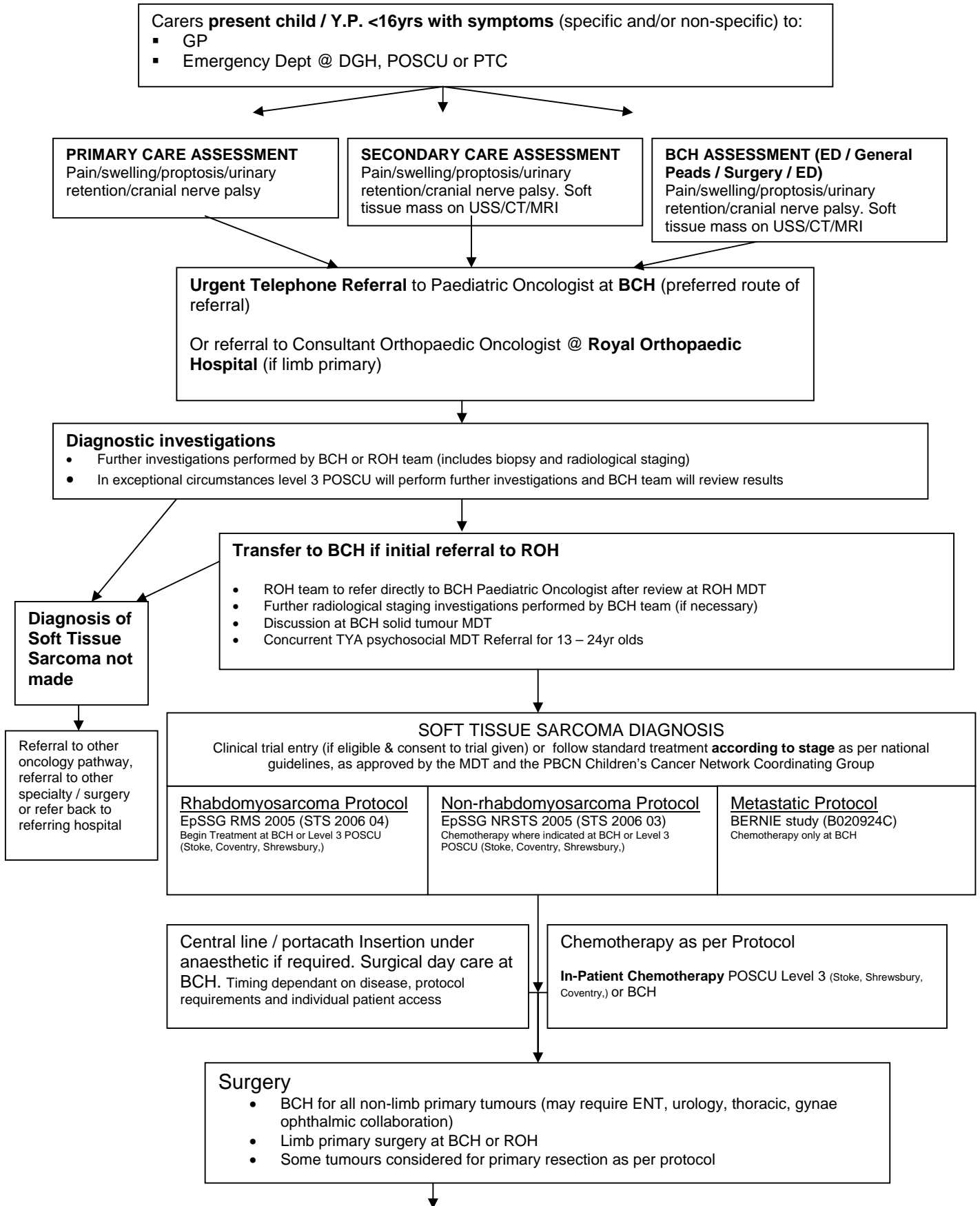
Date: July 2010

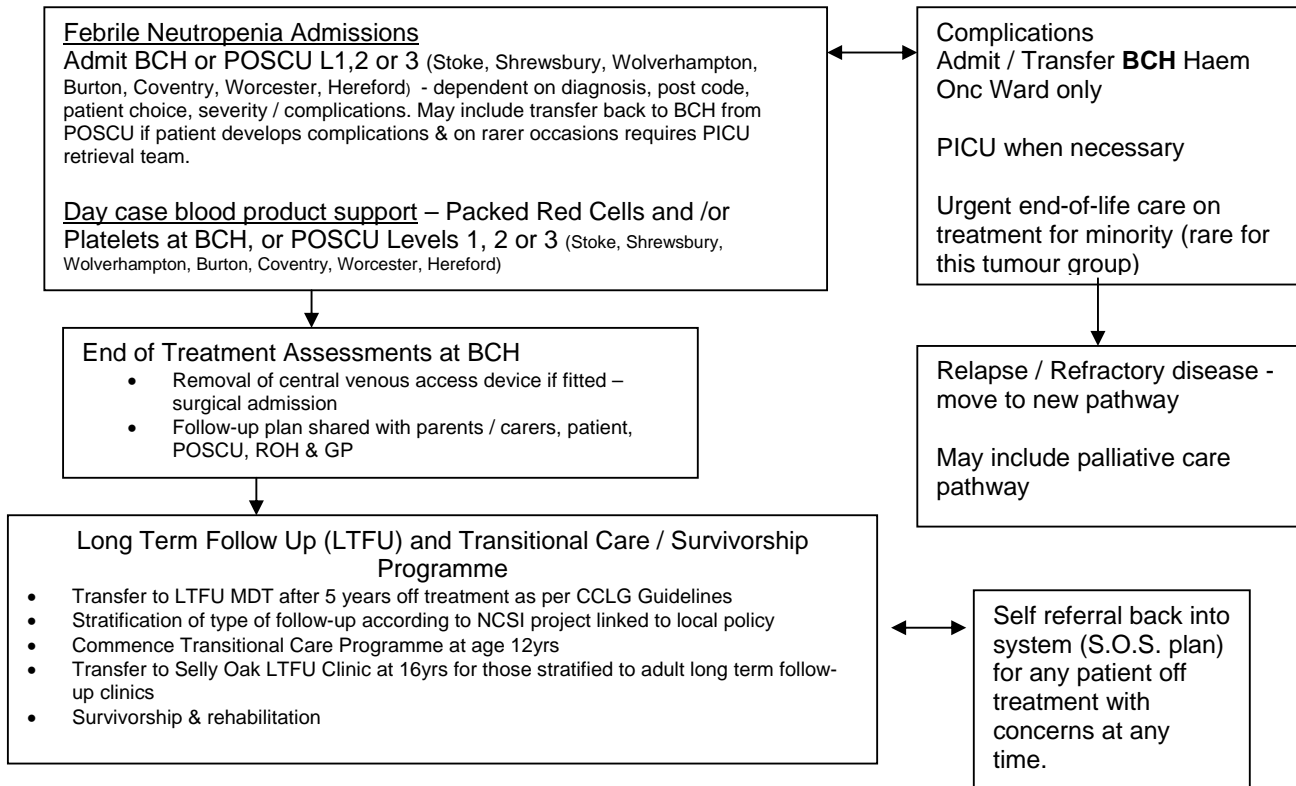
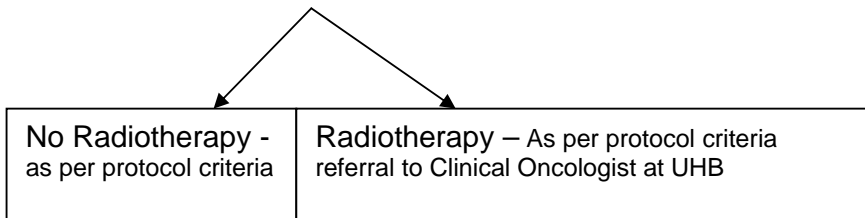
West Midlands Paediatric Oncology Supra Network

- PTC – Principal Treatment Centre
- POSCU – Paediatric Oncology Shared Care Unit
- Levels of shared care – Specified on pages 28 to 29 National Cancer Action Team Manual for Cancer Services 2008: Children's cancer Measures 2009
- University Hospitals Birmingham UHB - Radiotherapy and Young Adult Services
- Royal Orthopaedic Hospital ROH – Bone Tumour Service



Clinical Management Pathway: **Soft Tissue Sarcoma** [DH Quality Measure 09-7A-122]





Key	
BCH	Birmingham Children's Hospital
ROH	Royal Orthopaedic Hospital
UHB	University Hospital's Birmingham
TYA	Teenage & Young Adult
PICU	Paediatric Intensive Care Unit
CCLG	Childhood Cancer & Leukaemia Group
POSCU	Paediatric Oncology Shared Care Unit
LFTU	Long Term Follow-up