

Pathway for the Management of High Grade Dysplasia and Early Gastric Cancer

Version History

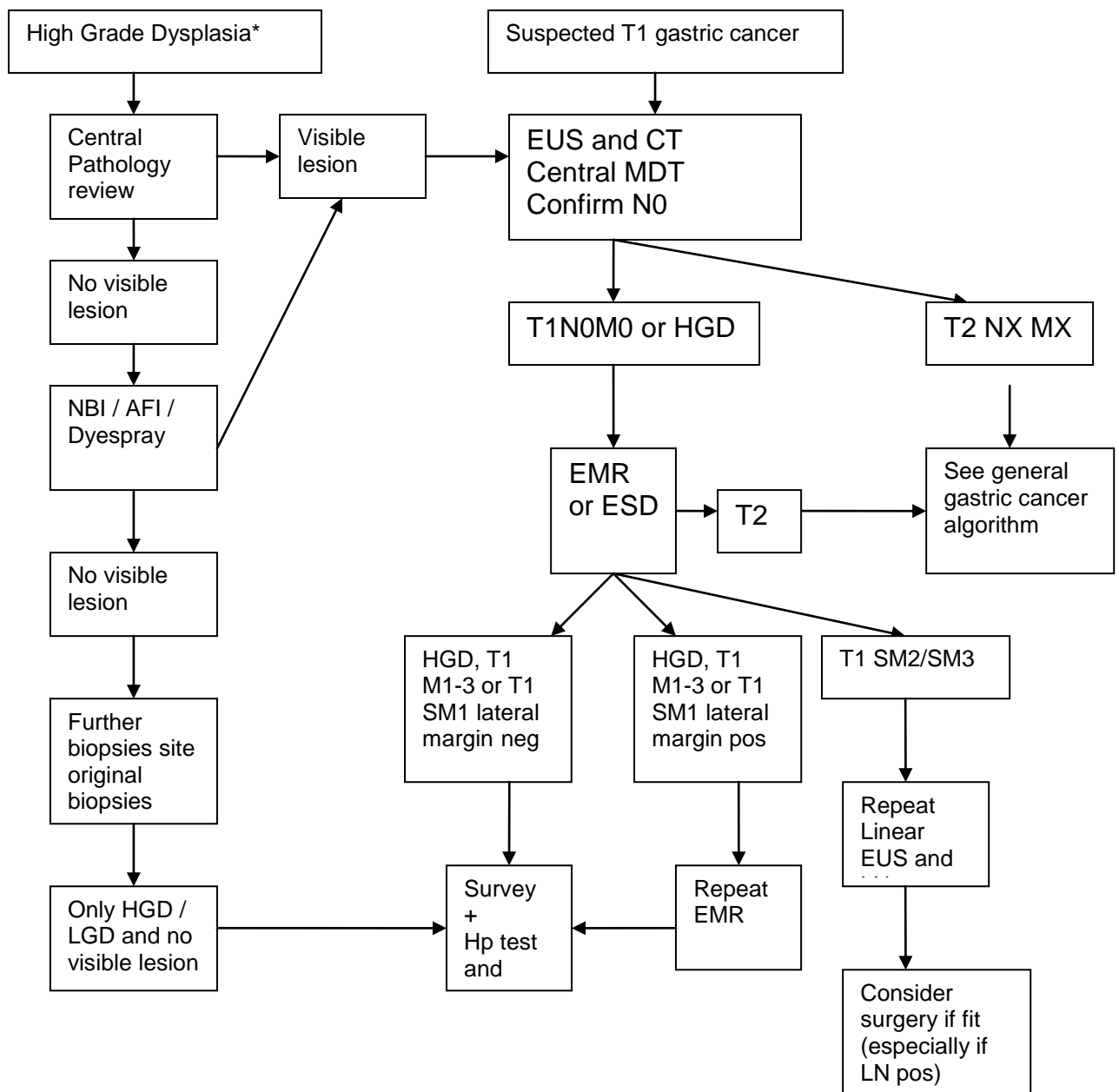
| Version | Summary of Change | Date Issued |
|-----------|---------------------------------------|---------------|
| Draft 0.1 | First draft following Upper G.I. NSSG | December 2008 |
| Draft 0.2 | Discussed at Upper GI NSSG | May 2009 |
| Draft 0.3 | Discussed at Upper GI NSSG | January 2010 |
| Draft 0.4 | Approved by NSSG | March 2010 |

1. Scope of the Guideline

This guidance has been produced to outline the Network wide pathway for the treatment and management of high grade dysplasia and early gastric cancer

2. Guideline Background

- 2.1 This document aims to combine up to date research, current thinking, and local expert opinion to generate Network Guidelines.



EMR - endoscopic mucosal resection NBI – narrow band imaging
 AFI – autofluorescence imaging ESD – endoscopic submucosal dissection
 Hp – Helicobacter pylori HGD – high grade dysplasia
 LN – lymph node

* Diagnosed after review by two GI pathologists

Version 3
 March 2010

3. Clinical Trials

- 3.1 Wherever possible, patients who are eligible should be offered the opportunity to participate in National Institute for Health Research portfolio clinical trials and other well designed studies.
- 3.2 Where a study is only open at one Trust in the Network, patients should be referred for trial entry. A list of studies available at each Trust is available from Pan Birmingham Cancer Research Network.
Email: PBCRN@westmidlands.nhs.uk .
- 3.3 Patients who have been recruited into a clinical trial will be followed up as defined in the protocol.

Monitoring of the Guideline

Implementation of the guidance will be considered as a topic for audit by the NSSG in 2013.

Author

Dr Nigel Trudgill Consultant Gastroenterologist
Sandwell and West Birmingham Hospitals NHS Trust

Approval Date of Network Site Specific Group

Date: March 2010

Approval Date of the Governance Committee

Date: June 2010

Approval Signatures

Pan Birmingham Cancer Network Governance Committee Chair

Name: Doug Wulff



Signature:

Date: June 2010

Pan Birmingham Cancer Network Manager

Name: Karen Metcalf

Signature:

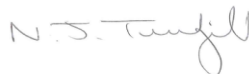


Date: June 2010

Network Site Specific Group Clinical Chair

Name: Nigel Trudgill

Signature:



Date: July 2010