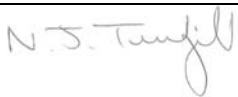


Coversheet for Network Site Specific Group Agreed Documentation

This sheet is to accompany all documentation agreed by Pan Birmingham Cancer Network Site Specific Groups. This will assist the Network Governance Committee to endorse the documentation and request implementation.

Document Title	Pathway for the Management of High Grade Dysplasia and Early Oesophageal Cancer
Document Date	02 June 2010
Document Purpose	Outline the Network wide pathway for the treatment and management of high grade dysplasia and early oesophageal cancer.
Authors	Dr Nigel Trudgill
References	Oesophageal Cancer – Algorithm Important (www.birminghamcancer.nhs.uk – Important Documents\Network Agreed Guidelines\Upper G.I.)
Consultation Process	Upper GI NSSG
Review Date (must be within three years)	June 2013
Approval Signatures: Network Site Specific Group Clinical Chair	
Date Approved by Network Governance Committee / /	

Pathway for the Management of High Grade Dysplasia and Early Oesophageal Cancer

Version History

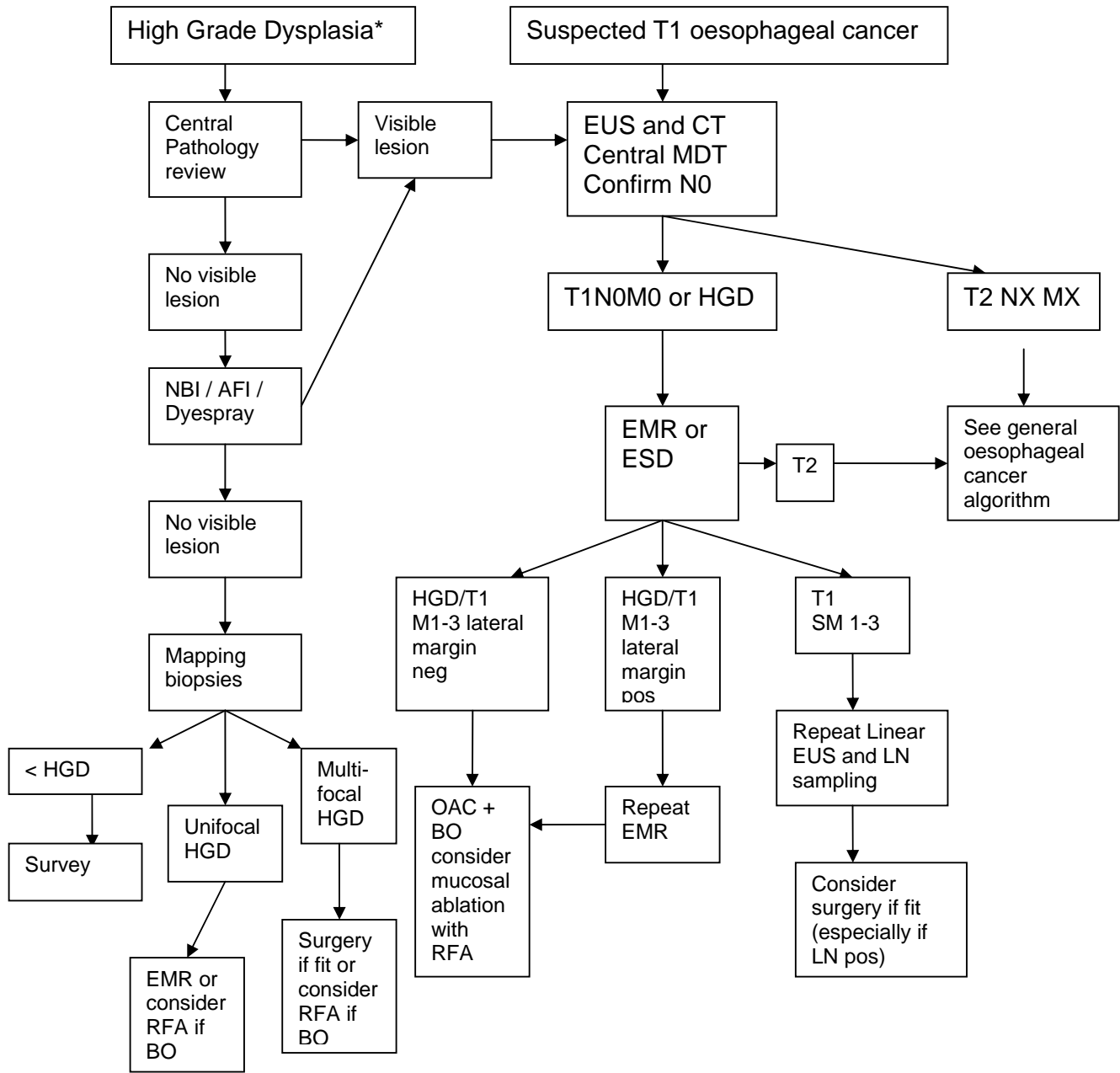
Version	Summary of Change	Date Issued
Draft 0.1	First draft following Upper G.I. NSSG	December 2008
Draft 0.2	Discussed at Upper GI NSSG	May 2009
Draft 0.3	Discussed at Upper GI NSSG	January 2010
Draft 0.4	Approved by NSSG	March 2010

1. Scope of the Guideline

This guidance has been produced to outline the Network wide pathway for the treatment and management of high grade dysplasia and early oesophageal cancer

2. Guideline Background

- 2.1 This document aims to combine up to date research, current thinking, and local expert opinion to generate Network Guidelines.



EMR - endoscopic mucosal resection NBI – narrow band imaging
 AFI – autofluorescence imaging BO – Barrett's oesophagus
 ESD – endoscopic submucosal dissection HGD – high grade dysplasia
 RFA – radio frequency ablation OAC – oesophageal adenocarcinoma
 LN – lymph node
 * Diagnosed after review by two GI pathologists

3. Clinical Trials

- 3.1 Wherever possible, patients who are eligible should be offered the opportunity to participate in National Institute for Health Research portfolio clinical trials and other well designed studies.
- 3.2 Where a study is only open at one Trust in the Network, patients should be referred for trial entry. A list of studies available at each Trust is available from Pan Birmingham Cancer Research Network.
Email: PBCRN@westmidlands.nhs.uk .
- 3.3 Patients who have been recruited into a clinical trial will be followed up as defined in the protocol.

Monitoring of the Guideline

Implementation of the guidance will be considered as a topic for audit by the NSSG in 2013.

Author

Dr Nigel Trudgill Consultant Gastroenterologist
Sandwell and West Birmingham Hospitals NHS Trust

Approval Date of Network Site Specific Group

Date: March 2010

Approval Date of the Governance Committee

Date: June 2010

Approval Signatures

Pan Birmingham Cancer Network Governance Committee Chair

Name: Doug Wulff



Signature:

Date: June 2010

Pan Birmingham Cancer Network Manager

Name: Karen Metcalf



Signature:

Date: June 2010

Network Site Specific Group Clinical Chair

Name:



Signature:

Date: July 2010